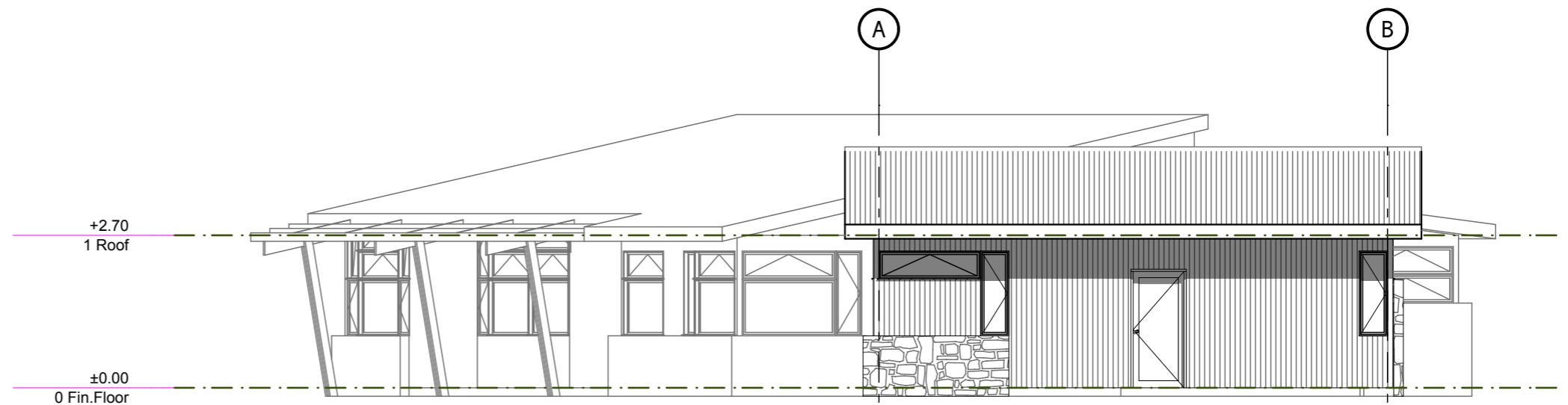
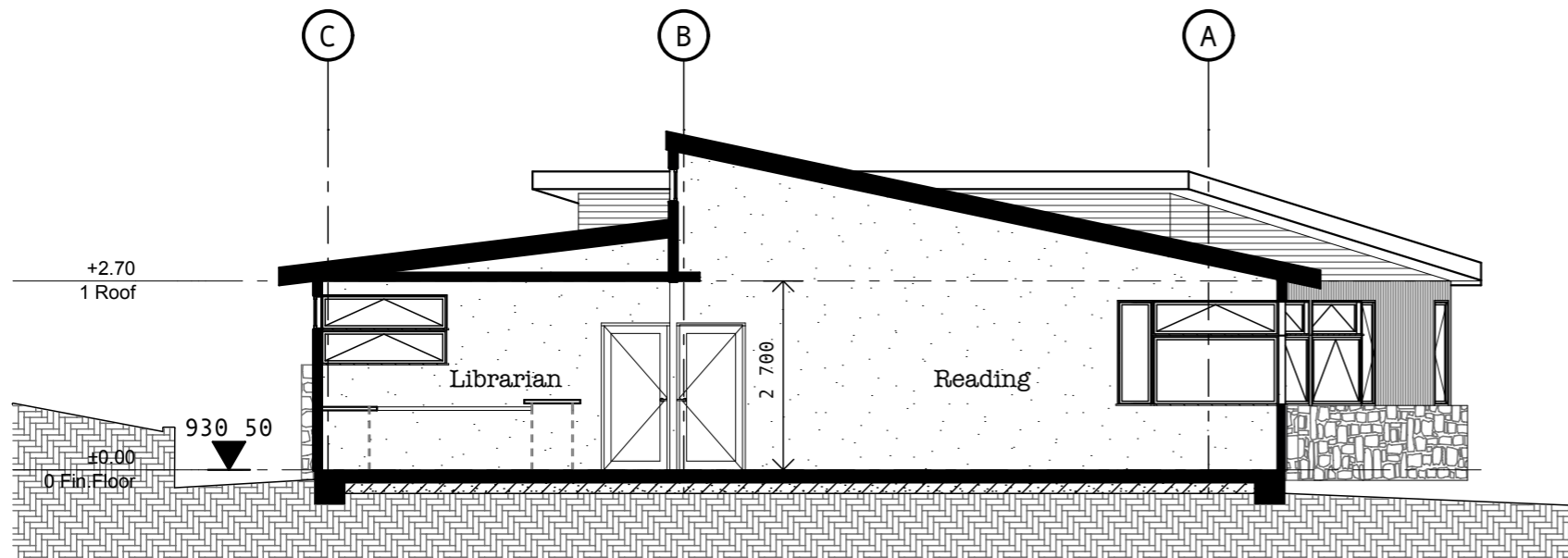




1 Nth East Elevation
1:100



2 Nth West Elevation
1:100



3 Section A2
1:100

Sunday, 29 March 2009

Sections

DRAFT

Property: Snowy Mountains Grammar School
Kosciuszko Road, Jindabyne NSW
Project: **New Library and General Purpose Learning Area**
jeff robinson architects jindabyne tel: 6456 1217

7

11